



Item No.: 202008
Travel Mount
(Windshield Suction Cup)

Installation Instruction

Overview Picture

Please read all of the instructions and look at the pictures before attaching the ProClip.

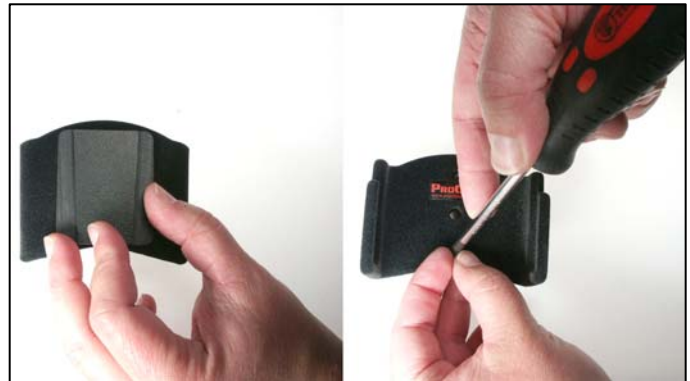
ProClip USA may not be held liable for any damage to a vehicle before, during or after the installation or removal of this dashboard mount.

ProClip USA may not be held liable for any personal injury resulting from accident or improper use or installation.

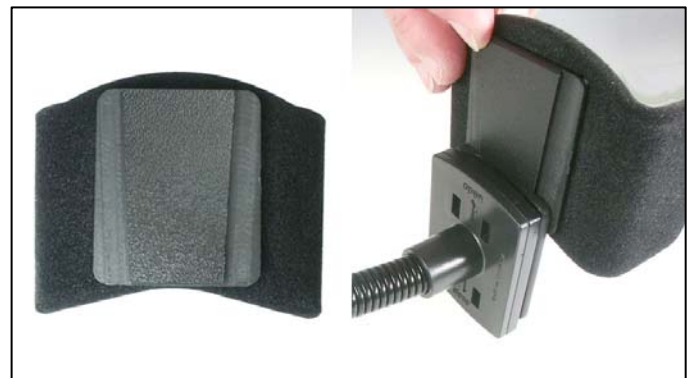
The ProClip mount in the installation pictures may look slightly different from the one you have received. However, the same instructions apply.



1.
Peel off the cover of adhesive tape on the male plate. Line up the holes on the device holder with the holes on the back of the male plate. Only using the screws provided, carefully (not too tight, otherwise you will strip the holes), screw the device holder to the male plate.



2.
Once the device holder is attached to the male plate, slide the device holder (with male plate attached) into the female plate of the travel mount.



3.
Attach the travel mount to the windshield.
(see next page of instructions attached)

Place your device into the device holder.





Item No.: 202008
Travel Mount
(Windshield Suction Cup)

Installation Instruction

Overview Picture

The images shown in these instructions are of a suction cup mount that is not exactly the same as your suction cup mount but the instructions still pertain.

1.
Moisten the entire plastic area for best possible suction attachment to the windshield.

2.
Press the suction cup area firmly to the windshield and flip the switch towards the suction cup to "lock" the suction cup to the windshield.

3.
Adjust the holder and "gooseneck" to the desired position. Slide your device down into the holder. To release your device from the holder, pull it upwards and out.

